

# 23 Keewaydin Drive

Salem, NH



**For Lease**  
**48,684 Sq. Ft.**  
**First Class Office Space**

Located in Southern New Hampshire at Exit #2 off Interstate 93. Twenty-three Keewaydin Drive is a four-story structural steel with EIFS facade building offering first-class office and medical space.

This beautiful and exceptionally maintained Granitex building features wrap around glass windows with views of the manicured landscaping.

Great access to Interstate 93 North and South.

Just 30 minutes to Boston and only 20 minutes to Manchester.

For further information, please call us or visit our website.

**(603) 894-1104**  
**[www.BrooksProperties.com](http://www.BrooksProperties.com)**

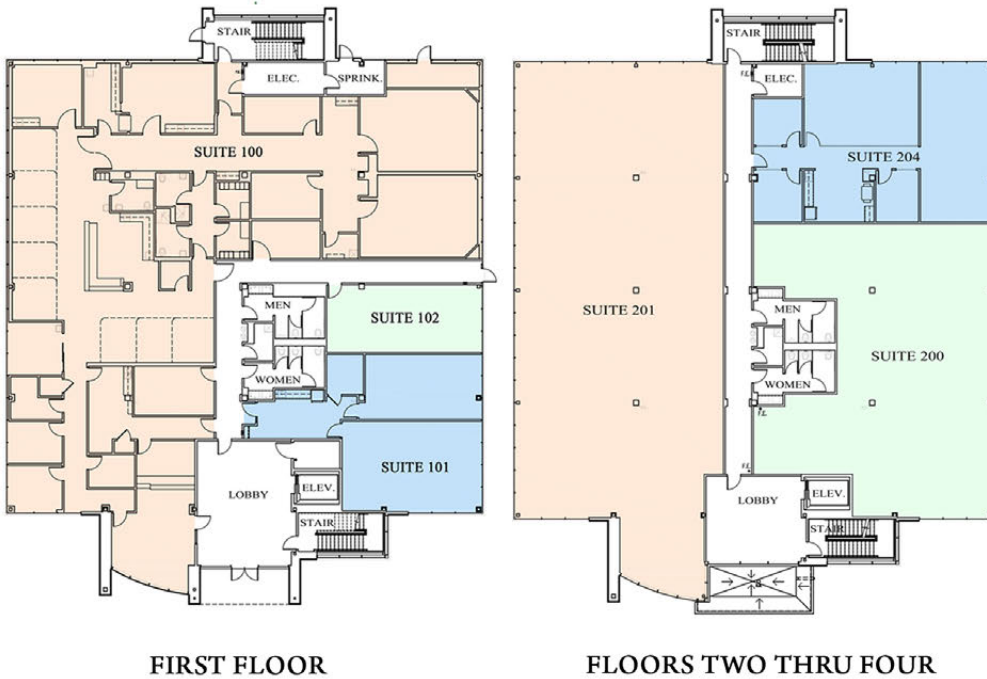


# Building Specifications

- Land: 4.1 acres
- Zoning: Commercial
- Building Size: 48,684 square feet
- Year Built: Proposed
- Type: Four Story, Structural Steel, EIFS
- Parking: 4 per 1,000
- Ceiling Height: 9'2" Finished
- Sprinkled: Yes
- Electrical Service: 1,200 Amp 3 phase 480 volt
- HVAC: Split System
- Type Fuel: Natural Gas
- Sewer Water: Municipal Water/Sewer



## Sample Floor Plan



9 Red Roof Lane  
Salem, NH 03079  
(603) 894-1104

[www.BrooksProperties.com](http://www.BrooksProperties.com)