

5 Branch Street

Methuen, MA



96,000 Sq. Ft.
First Class
Office/Medical Space

Located at the highest point of the Valley Office Park in Methuen, MA. Five Branch Street is a three story, architectural block, structural steel building offering 96,000 sq. ft. of first class office/medical space.

This attractive masonry facade with walls of glass has pleasant views of the beautifully matured landscape.

This exceptionally maintained building has great access and visibility to Interstate 93 North and South at Exit #46.

Just 30 minutes to Boston and only 20 minutes to Manchester.

For further information, please call our main office or visit our website:

(603) 894-1104
www.BrooksProperties.com

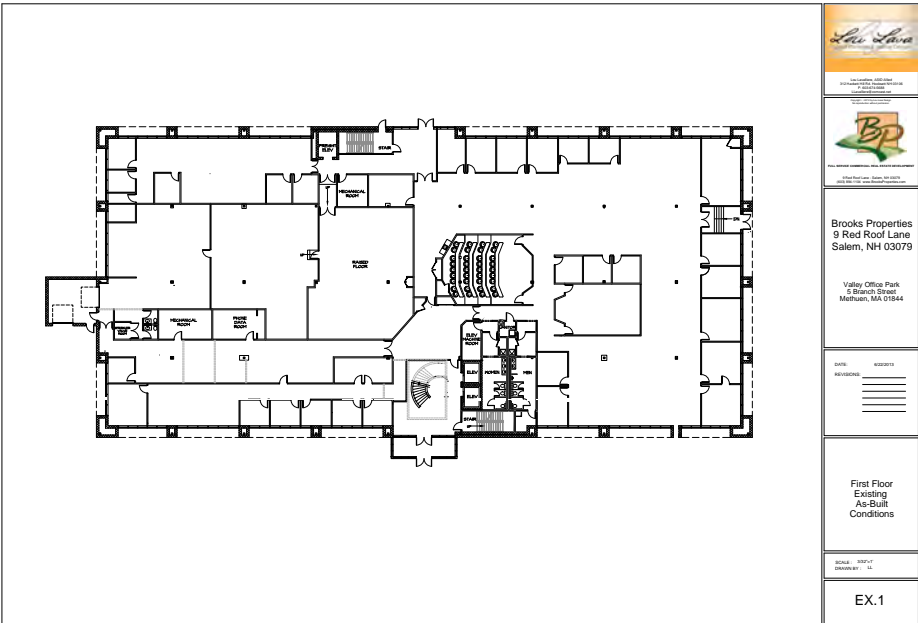


Building Specifications

- Land: 5.79 acres
- Zoning: Business Highway
- Building Size: 96,000 square feet
- Year Built: 1985
- Type: Three Story, Structural Steel, Architectural Block
- Parking: 3.5 per 1,000
- Ceiling Height: 9'
- Sprinkled: Yes
- Electrical Service: 1,600 amp / 480 v
- HVAC: Gas Fired Rooftop Units, Fully A/C
- Type Fuel: Natural Gas
- Utilities: Municipal Water/Sewer



Floor Plan




BROOKS Properties
 FULL SERVICE COMMERCIAL REAL ESTATE DEVELOPMENT
 9 Red Roof Lane
 Salem, NH 03079
 (603) 894-1104
www.BrooksProperties.com